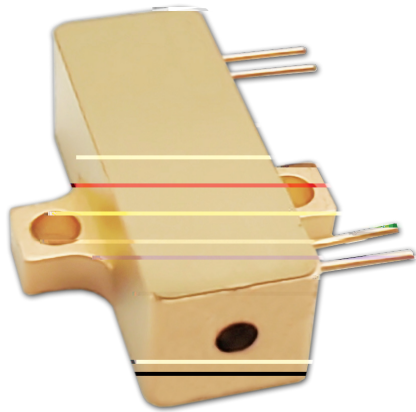


# PIN 1535nm



1-10kHz PIN 1535nm

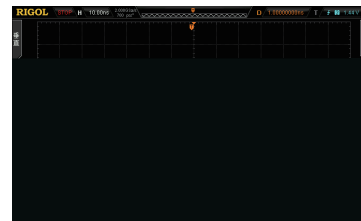
PIN

PIN

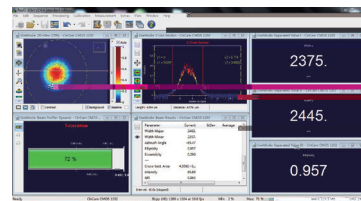
Er:glass

Q

波长 (nm)	1535			
( J )	40	20	10	5
(ns)	5	6	8	10
(kHz)	1	2.5	5	10
(A)	5			
PIN (V@50 )	2			
Typ.(mrad)	16	17	18	20
	TEM <sub>00</sub>			
(g)	7			
(LxWxH,mm)	21x8x7			
( )	-40~65			
( )	-55~80			



PIN



波长	率	率	脉冲宽度	单脉冲能量 μ	尺寸
1535	R1535-1-5-40-F1B	1	5	40	21x8x7
	R1535-2.5-6-20-F1B	2.5	6	20	21x8x7
	R1535-5-8-10-F1B	5	8	10	21x8x7
	R1535-10-10-5-F1B	10	10	5	21x8x7

