

MCA

1.5ns



MCA RealSubns®
Q

1064nm 532nm

355nm 266nm

1.2ns

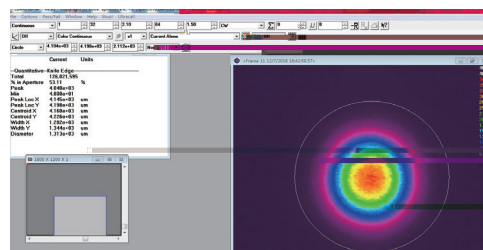
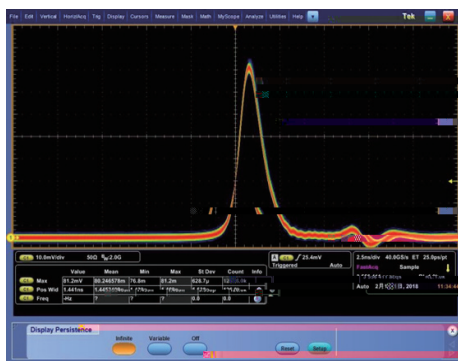
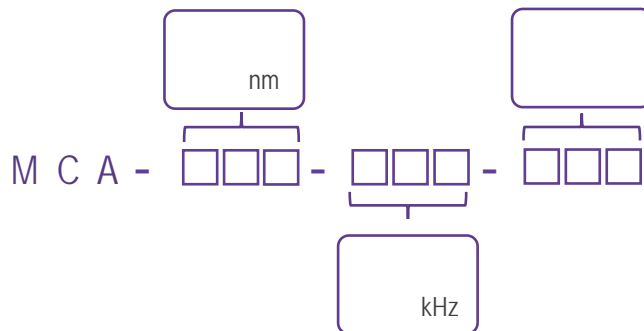
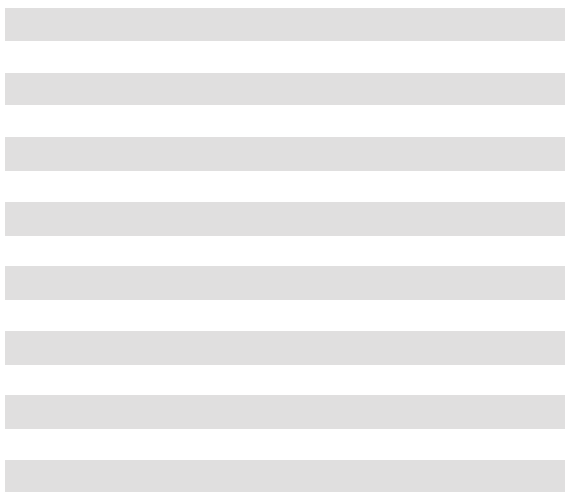
120 J

20kHz

TEM₀₀

光学参数																
(nm)	1064				532				355				266			
(kHz)	1	5	10	20	1	5	10	20	1*	5*	10*	20*	1*	5*	10*	20*
(mW)	120	300	400	400	60	150	150	200	30	50	50	60	10	40	30	40
(μJ)	120	60	40	20	60	30	15	10	30	10	5	3	10	8	3	2
(ps)	2000	1500		1500	1200		1500	1200		1500	1200		1500	1200		
(8h)	±3%															
	TEM ₀₀															
Typ.(mrad)	@1/e ²	8			6			5			5					
	@1/e ²	8			6			5			5					
	>100:1															
系统参数																
	100-240 VAC 50/60 Hz															
	RS232 USB															
(W)	35															
(W×H×L,mm)	168×88×140															
(W×H×L,mm)	45×30×120															
()	15-35															
()	0-60															

波长



mm

