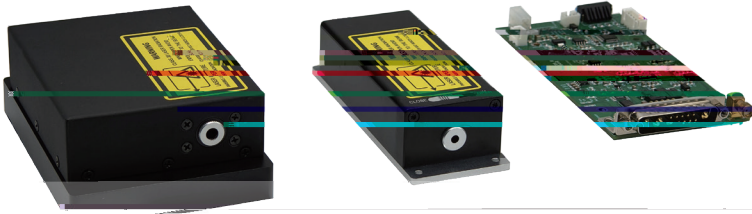


MCD 300ps-2ns OEM



MCD系列RealSubns®微片激光器是基于半导体泵浦的被动调Q固体激光器，配套小型OEM电路板，具有体积小、便于集成、光束质量优异、单脉冲能量稳定、可双脉宽输出等优点。我司亦可为用户提供匹配波长的隔离器，1-2mJ更高能量产品可接受定制。

300ps

600μJ

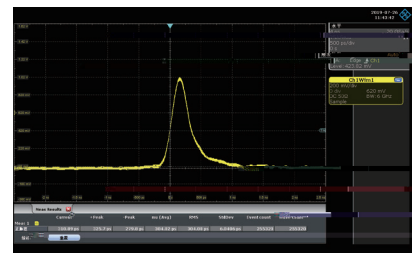
偏振方向稳定性高

TEM₀₀

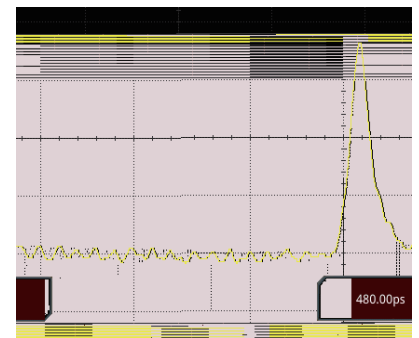
结构紧凑，高可靠性

双脉宽输出可选

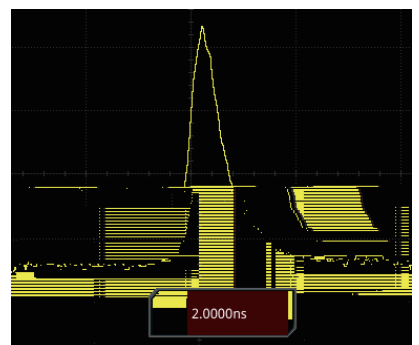
红光指示可选



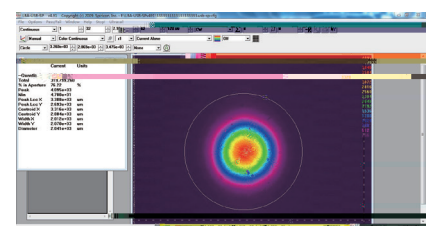
300ps



500ps



2ns



光学参数				
(nm)	1064			
(kHz)	0.01			
(mW)	6	5	5/5	
(J)	500	500	500/500	
(ps)	500	300	300/2000	
(8h)	±3%			
TEM ₀₀				
Typ.(mrad)	@1/e ²	12	6-7	
	@1/e ²	12	6-7	
	P	>100:1	300ps-P	>100:1
			2ns-S	>100:1
系统参数				
	12V 5A			
	SMA			
(W)	10			
(W×H×L,mm)	68×35×120			
(W×H×L,mm)	45×30×120	80×36×124		
()	15-35			
()	0-60			

